

Approval Process Flowchart Universal



Site identified for EV charging station installation

Determine scale and situation of proposed EV charging station

Identify site ownership status

Is the EV charge station site on public land?

Information and consent received by external authorities, including:

- Council
- RMS
- NSW Government
- Essential Energy

Impact on existing infrastructure understood, including:

- Car parking
- Electricity augmentation
- Adjacent road network

Installation on behalf of a private entity?

Agreements in place including:

- licensing/lease arrangements, and
- Maintenance agreements

Formal permission from landowner required

Formal approval from landowner i.e. Council required

No EV charging station installation

Formal approval from landowner i.e. Council required

Does the infrastructure fit into the exemptions of Planning Scheme?

Provide information to council

Will the EV charging station change the "use" of the land?

Does the EV charge station trigger the provisions of an overlay (e.g. Heritage)?

Do other structures require a planning permit?

- Carpark
- Signage
- canopies

Obtain Complying Development Certificate

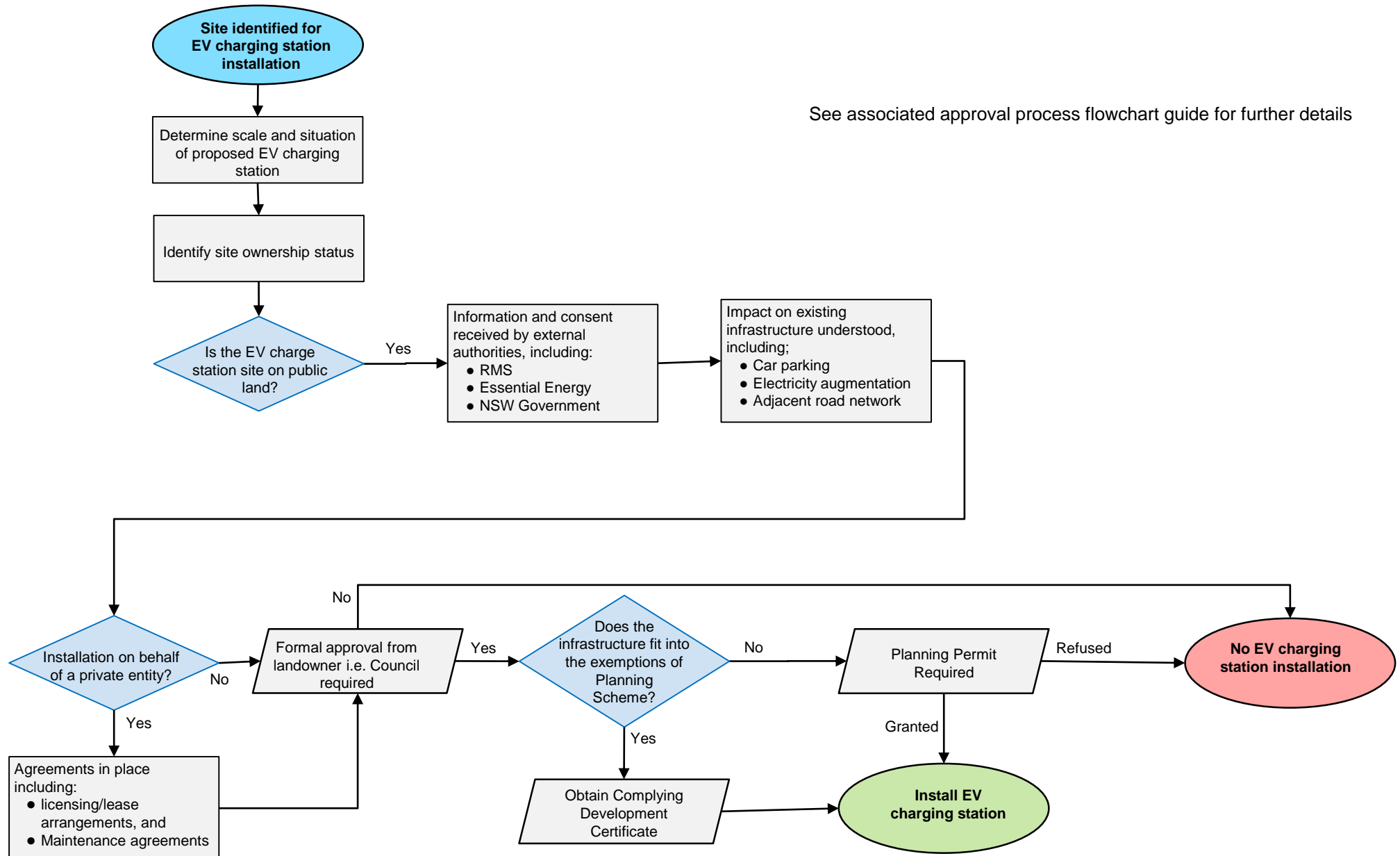
Planning Permit Required

Install EV charging station

See associated approval process flowchart guide for further details

Approval Process Flowchart Businesses installing on public land

See associated approval process flowchart guide for further details



Approval Process Flowchart Businesses installing on private land

